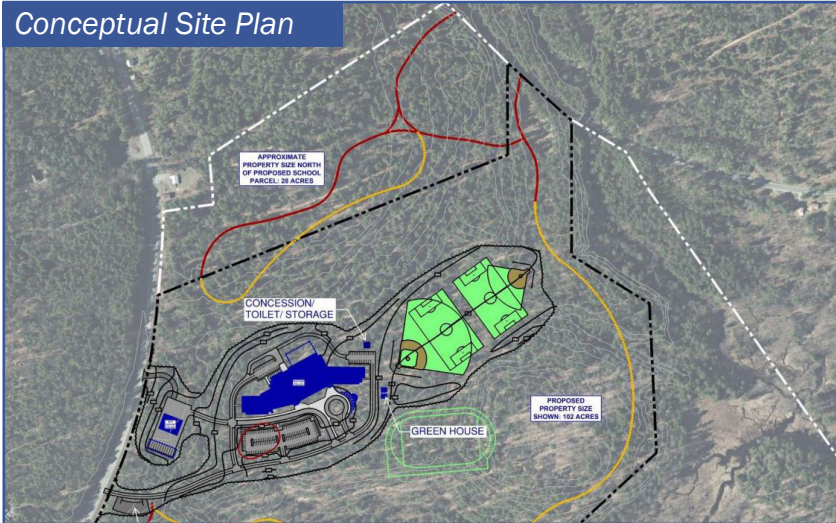




## Capital Project Newsletter: July 2023

### Conceptual Site Plan



## Why is a new building needed?

The need for a new building arises primarily from the limitations of our current facilities, which are unable to meet the evolving requirements of our school district. Some of the key reasons for constructing a new building include: insufficient space, limited expansion options, and structural and mechanical issues.

Building a new campus will allow the district to create a state-of-the-art learning environment that addresses these challenges and supports the growth and development of our students. It will also ensure that we have the necessary facilities and resources to provide a well-rounded educational experience for years to come.

### Insufficient Space

Our current facilities lack the necessary space to accommodate the growing needs of our students, faculty, and staff. This includes not only classroom space but also areas for extracurricular activities and support services.

### Limited Expansion Options

The existing campuses do not provide enough room for adding new structures or incorporating the bus garage and athletic fields on site. A new, larger campus will enable us to bring these facilities together, improving efficiency and accessibility.

### Structural & Mechanical Issues

The current buildings suffer from a range of structural and mechanical problems, which not only impact the learning environment but also pose ongoing maintenance and repair challenges. A new building will be designed with modern construction techniques and materials, providing a safer and more durable infrastructure.

### WHAT'S INSIDE

- 2 Mandates & Programs
- 3 Funding & Advocacy
- 4 Cost Comparison & Contact Information



## Griffin Greatness



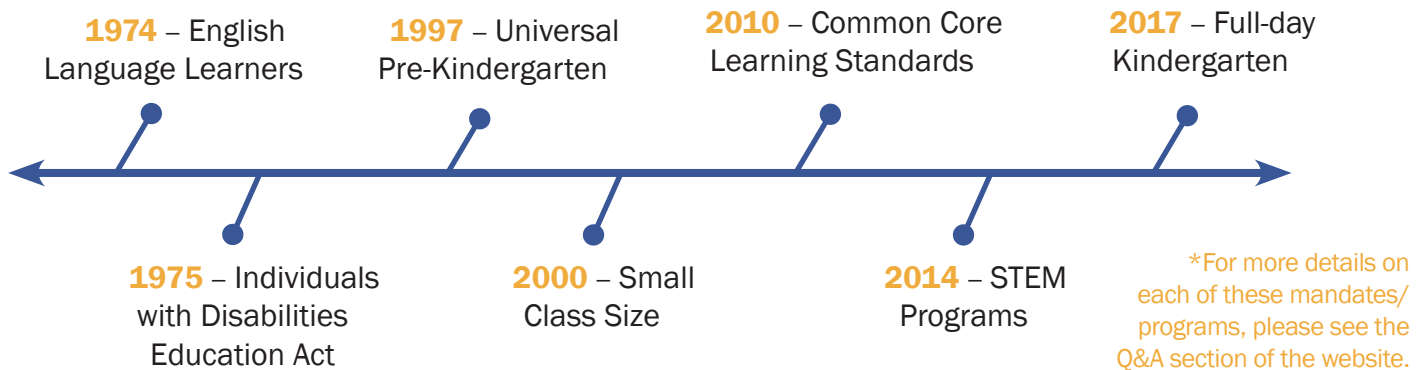
# Why not put all of the students in a current building?

While it's true that both of our current buildings previously accommodated around 400 students in the later part of the 1900s, it's important to consider that the educational landscape has changed significantly since then. Today, there are numerous new mandates, programs, and opportunities designed to enhance the learning experience for our students, and these require additional space within our facilities. As such, neither of the current campuses can accommodate

all of our students, faculty, and staff while also providing the necessary resources and space for these modern educational initiatives. The construction of a new campus will allow us to create a more suitable environment for our students, addressing their needs and fostering their academic growth.

We need the equivalent of approximately 22 full-sized classrooms just to accommodate the increased programming and mandates.

## Timeline of Mandates & Programs \*



## Space for Counseling & Mental Health Services

Counseling and mental health services have become increasingly important in schools, and many school districts have implemented programs to provide these services to students. BVCS D has five offices and one classroom. Here are some examples of initiatives related to counseling and mental health services that may require additional space in schools:

**School Counseling Programs:** Many schools have implemented counseling programs to help students deal with a wide range of issues, including academic difficulties, mental health concerns, and social-emotional challenges. These programs may require additional space for counseling offices or private meeting rooms for students to talk with counselors. School counseling programs have been a part of schools for many years, but the importance of these programs has grown in recent years, with many schools hiring additional counselors and expanding counseling services to address the growing mental health needs of students.

**Mental Health Clinics:** Some school districts have partnered with local mental health clinics to provide additional support to students. These clinics may be located on school grounds or in nearby facilities, and they may provide counseling, therapy, or other mental health services to students. This may require additional space in schools or nearby facilities. Mental health clinics have been utilized in schools for many years, but the importance of these partnerships has grown in recent years, as schools have recognized the need for additional mental health support for students.

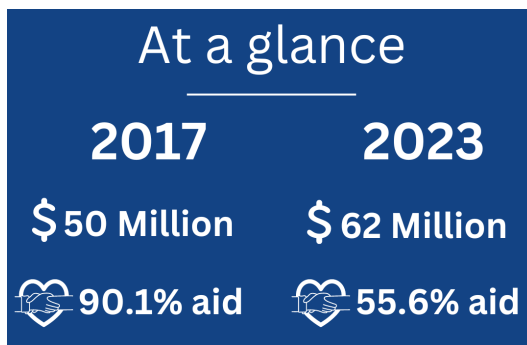
**Safe Spaces for Students:** Some schools have designated safe spaces for students who may be dealing with mental health issues or other challenges. These spaces may be used for quiet reflection, meditation, or other activities that can help students feel calm and supported. These safe spaces may require additional space within schools, such as unused classrooms or other areas that can be repurposed. The use of safe spaces in schools has become more popular in recent years, as schools have recognized the importance of creating supportive environments for students. BVCS D has one office space.

# What has the District done about the discrepancy in funding levels?

The District has been tirelessly advocating for the originally expected funding level since it came to our attention that there was a discrepancy between what was anticipated and what was offered by the New York State Education Department (NYSED). The initial aid estimate of 90.1% on a \$50,000,000 building had led us to prepare for a local share of approximately \$5 million. To minimize any additional tax impact, we diligently funded our capital reserves to reach this figure. However, due to estimates being based on 2016 prices, coupled with inflation and other related expenses, the cost of the building has now increased to roughly \$62 million.

Contrary to our expectations, NYSED's funding formula led to an initial offer of 42% aid, or \$26 million. This was significantly lower than anticipated. Undeterred, we approached NYSED and successfully advocated for an increase, bringing the aid percentage up to 48.5%. We continued to persist and were able to negotiate further increases until we reached the current figure of \$34,387,656, or 55.6% aid. However, during our final meeting with NYSED, including the Commissioner, we were made to understand that no further meetings would be scheduled.

We didn't limit our advocacy to NYSED. We have also approached various representatives at state and



local levels. Our discussions with these representatives centered around seeking their assistance in pushing for additional funding. We also involved Board of Regents member Roger Catania in our quest for increased aid.

The New York State School Boards Association and the New York Council of School Superintendents were engaged to help us advocate for additional funding. Heather Reynolds, Board of Education President, had a conversation with U.S. Representative Elise Stefanik regarding our funding plight. Further, President Reynolds and I met with the New York State Assistant Secretary for Education from Governor Hochul's office, along with several members of the NYS Department of Budget.

Our advocacy has been relentless, reaching out to anyone who we believe can help us bridge the funding gap. We continue to work with Senator Stec and Assemblyman Simpson to explore legislative avenues for securing additional funding. If you know of any other influential individuals who may be able to assist us, we would greatly appreciate you reaching out to the District Office with your suggestions.

## People & Agencies BVCS worked with



Assemblyman  
Matt Simpson



Assemblyman  
Billy Jones



Senator  
Dan Stec



Board of Regents  
Member Roger  
Catania



NYSED  
Commissioner  
Betty Rosa



NYSED Assistant  
Commissioner  
Christina Coughlin



Congresswoman  
Elise Stefanik

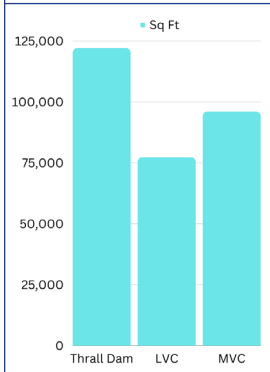
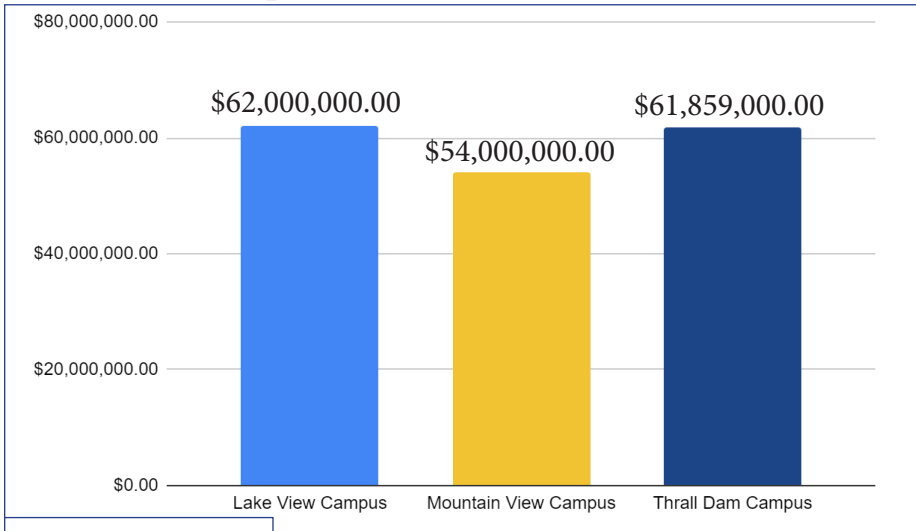


Assistant Secretary  
for Education  
Michael Mastroianni



NYS Department  
of Budget

# Cost Comparison



## WHO CAN I CONTACT?

If you have questions or would like to meet with the superintendent for more details, please email [facilityquestions@boquetvalleycsd.org](mailto:facilityquestions@boquetvalleycsd.org).

## WHERE CAN I FIND MORE INFORMATION?

For more information about the Capital Project, please visit our district website, <https://www.boquetvalleycsd.org/>

**Boquet Valley Central School District**  
 7530 Court Street  
 Elizabethtown, NY, 12932

Non Profit Org.  
 U.S. Postage Paid  
 WESTPORT  
 NEW YORK  
 PERMIT NO. 7

Postal Patron

**Joshua R. Meyer**, *Superintendent of Schools*  
 Jana Atwell, *District Clerk*

**BOARD OF EDUCATION**  
 Heather Reynolds, *President*  
 Dina Garvey, *Vice President*  
 Evan George  
 Micah Stewart  
 Sarah Kullman  
 Suzanne Russell  
 Philip Mero